



ANDHRA PRADESH STATE ROAD TRANSPORT CORPORATION

O/o the VC & MD,
Dt. 18.08.2023

No: ATM-I/e-POS(6)/2023

To
All District Public Transport Officers,
APSRTC.

Sub: e-POS – Instructions to insist Depot authorities to send and receive faulty e-PoS machines from Regional service centers in the carton boxes to avoid damages during transit -Reg.

Corporation has taken decision to implement Unified Ticketing Solutions (UTS), an integrated solution for all the ticketing related applications. As part of the project, TIMs were replaced with advanced Android based e-POS Machines.

As on date 13739 e-PoS machines were supplied across the Corporation for implementation of UTS in all the services of Corporation.

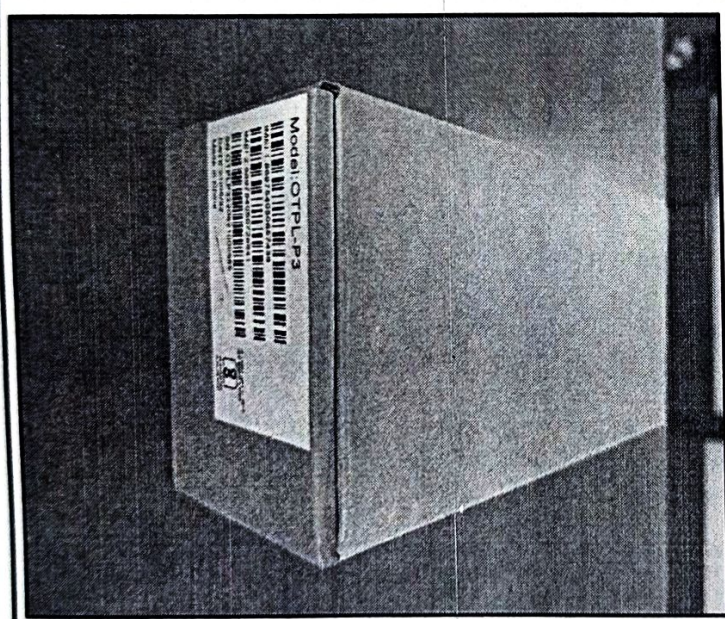
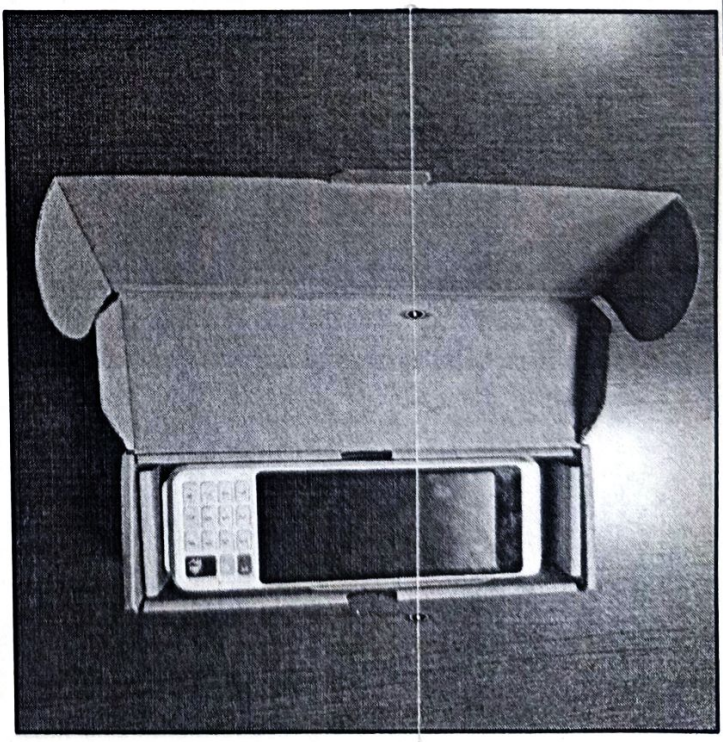
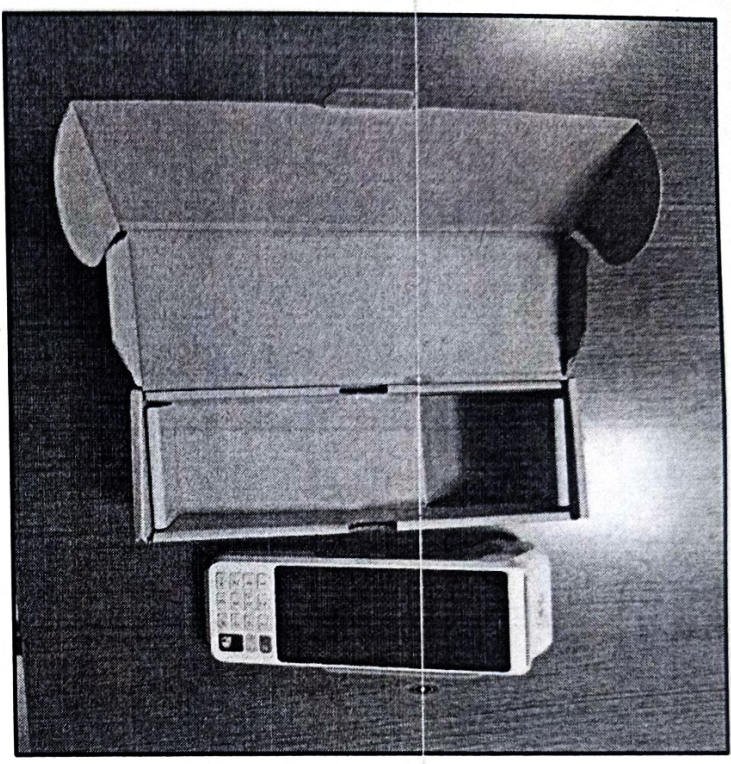
Till date, approximately 1183 e-PoS machines were sent to Regional Service Centers for repair. It is observed that most of the e-PoS machines are being sent directly without proper protection and getting damaged in transit. It is proposed to send the faulty e-PoS machines duly packing in the e-PoS carton box to avoid damages during transit.

If multiple faulty e-PoS machines are being sent, all that machines with boxes have to be kept in a big carton box which has polythene cover inside which can hold 10 epos machine boxes and then send to Regional Service Centers to avoid damage of e-PoS machines during transit. The epos machines were supplied to depots in these carton boxes and are available in depots.

Similarly M/s Ebix Cash Ltd., will return the e-PoS machines back from RSCs to the Depots in the same carton boxes after repair.

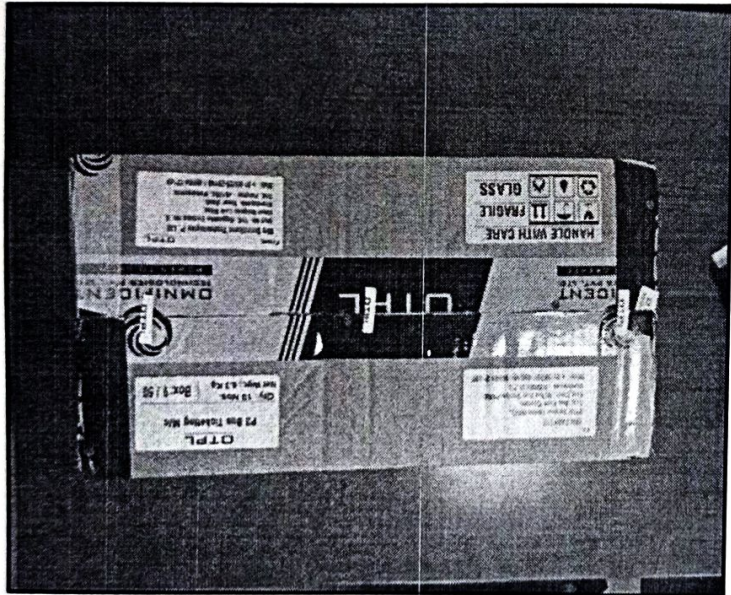
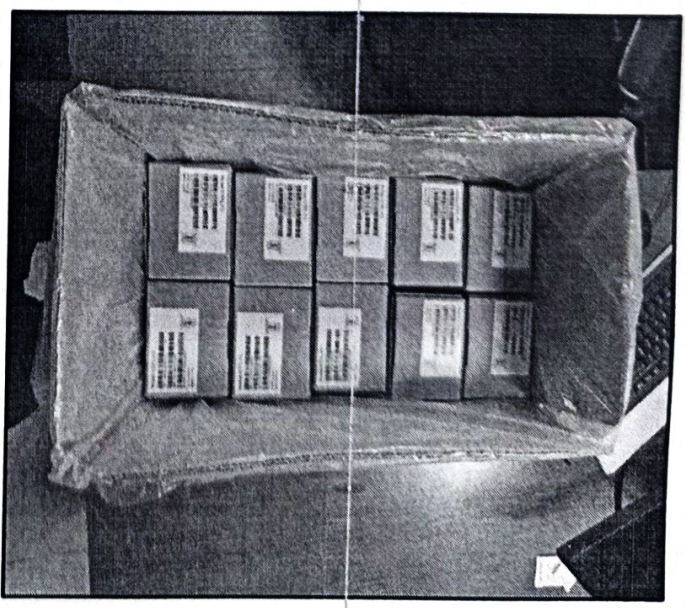
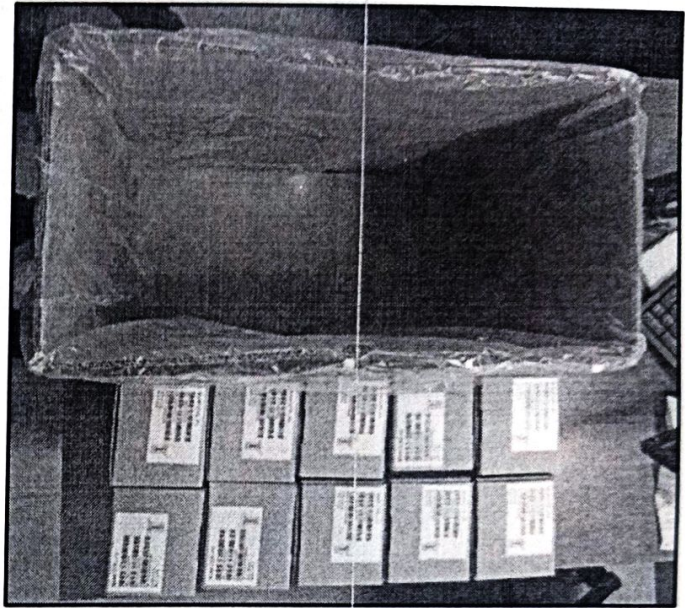
The pictures of the e-PoS box with single machine is enclosed in **Annexure-I**

The pictures of the carton box with multiple machines is enclosed in **Annexure-II**



Use e-POS Carton box to send single e-POS machine.

These Carton boxes are sent to Depots while new e-POS machines were supplied .



Use big Carton box to send multiple e-POS machines.

These Carton boxes are sent to Depots while new e-POS machines were supplied .