



ANDHRA PRADESH STATE ROAD TRANSPORT CORPORATION

MECHANICAL ENGINEERING DEPARTMENT: BUS BHAVAN

HYDERABAD - 500624. PH: 040-27616145

No:TL10/843(1)/AMED/ 2012-MED

Date:07.07.2012.

CIRCULAR No:16/2012-MED, Dt: 07.07.2012

Sub:- **VEHICLES:**Provision of Rear View Mirrors – Comprehensive guidelines issued
–Reg.

Ref:- ARAI Specification No: AIS:001 and AIS:002

-oOo-

Rear view mirror though a small component in bus body, plays a vital role in safe driving by the driver. The rear view mirror is nothing but a third eye to the driver. Hence the correct location and proper fitment of the rear view mirror cannot be ignored in the bus body maintenance. As per the ARAI standards, the recommended minimum sizes of the mirror are 183 mm (W) X 315 mm (H) to have the recommended field of vision.

At present, rear view mirrors approved by ARAI of size 385 mm(H) X 190mm(W) are being supplied by the chassis manufactures along with the chassis and are being used during bus body fabrication with brackets of suitable length. For one reason or the other, like breakage of rear view Mirror brackets or rear view mirror itself, these rear view mirrors are being removed from the vehicles and small vision mirrors of size 140 mm x 100 mm which are stock item at zonal stores are drawn and fitted to the buses. As the vision mirrors available in stores do not match the standards of ARAI, this will not only hamper the visibility for the drivers but also damage the aesthetic appearance of the vehicle.

Keeping in view of the above the Rear View Mirrors and the fitment brackets for high end buses i.e., Super Luxury and above types as well as for low end buses like Deluxe, Express, Saptagiri Express, Pallevelugu and City buses is now standardized and the respective drawings are enclosed at Annexure – I & II.

Hence, it is now instructed to use the modified rear view mirrors along with modified fitment brackets to have uniformity as well as to improve the appearance and brand value of the vehicles during the new bus body fabrication as well as for replacement during BCO/FC/Selective bus body repairs.

Further, COSs of zonal stores are instructed to initiate action to procure the rear view mirrors with minimum size of 315 mm (H) x 185 mm (W) which are having type approval and recommended for heavy passenger vehicle only and to supply to the depots on the need basis duly making the existing convex type small vision mirrors/ vision mirror assembly of size 140 mm x 100 mm 'NTR'. The DyCMEs of the regions shall assess month wise and depot wise requirement of the rear view mirrors and their brackets and to coordinate with zonal stores for regular supply and also to monitor the fitment of specified rear view mirrors with specified brackets only during their inspections.

-Sd-

VICE CHAIRMAN & MANAGING DIRECTOR

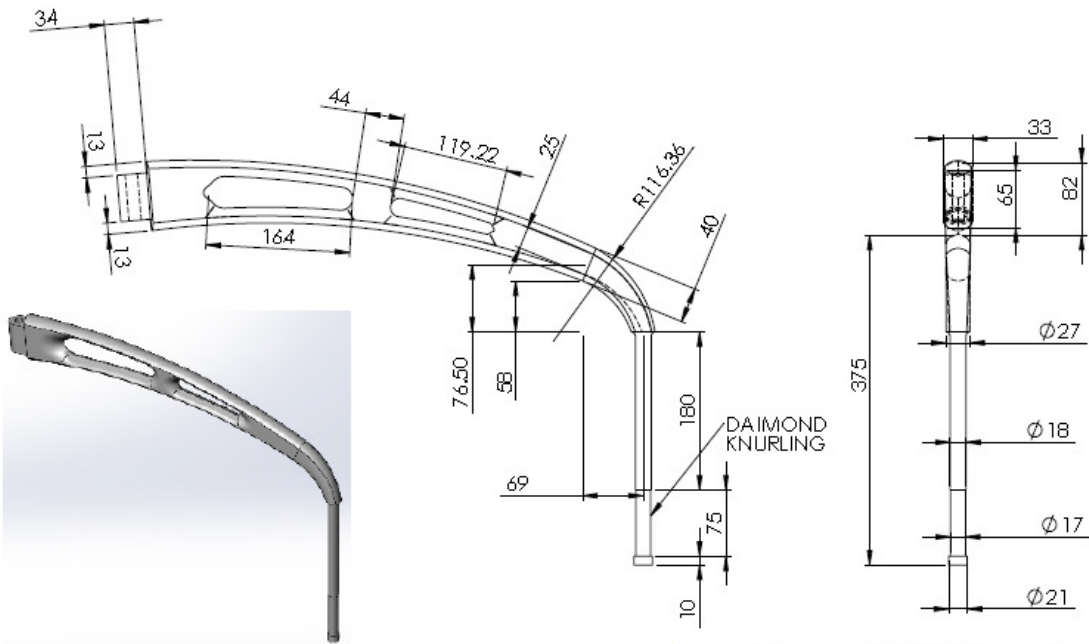
Copy to:

The Director(V&S), ED(E, IT & HRD), ED(A&P), FA&CAO and ED(Zone)s for information.
CME(O)/CME(C&B)/ CCOS / CFM for information and necessary action.

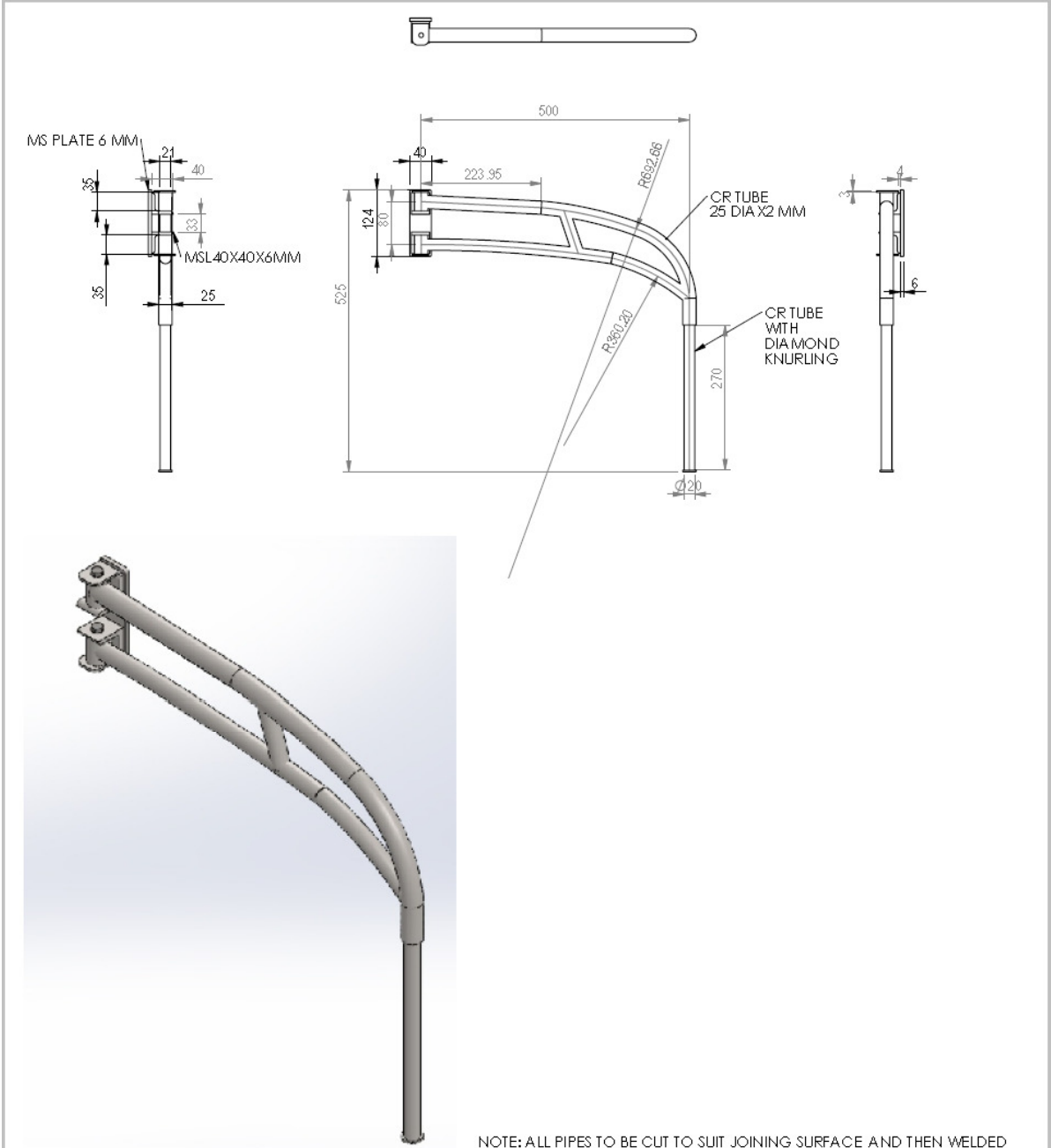
All The REGIONAL MANAGERS for information and necessary action.

All The Dy.CMEs/ COSs /Dy.CAOs of Zones for necessary action.

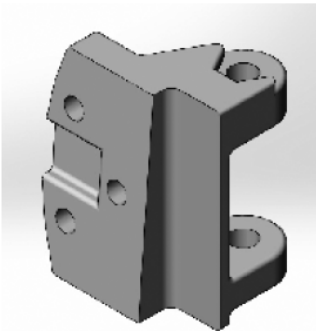
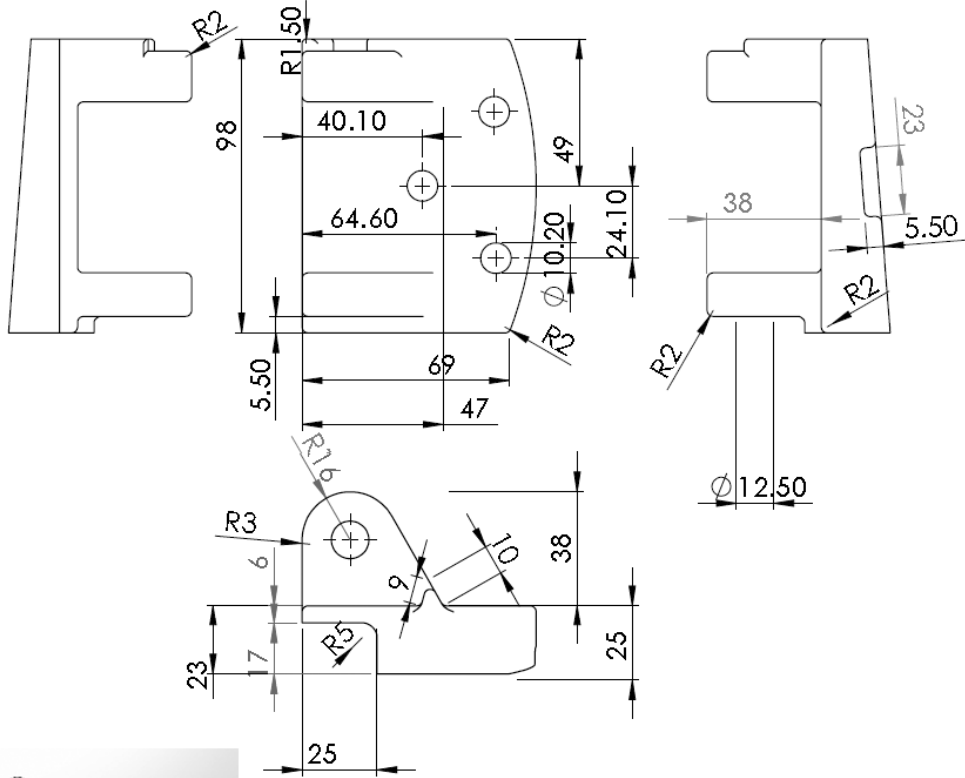
All the Depot Managers and Maintenance in-charges for necessary action.



| | | |
|--|--|--|
| HIND 2011-12-01-01-10 2011-12-01-01-10 2011-12-01-01-10 2011-12-01-01-10 | | DD POF SCALF DE ANING A 4B REA PEA B10 H31A H P04B REA 43 P04 E1 CO F PD EA10-4 |
| DESIGNED CHECKED APPROVED DATE | DESIGNER ENGINEER APPROVED DATE | IIIIT RVM BRACKET FOR SUPER LUXURY |
| MATERIAL CAST ALU | | FINISH BOND |



| | | | | | | | | | |
|---|--|---|--|-----------------------------------|--|---|--|---------------------------------|--|
| UNLESS OTHERWISE SPECIFIED: DIMENSIONS ARE IN MILLIMETERS SURFACE FINISH: TOLERANCES: LINEAR: ANGULAR: | | FINISH: ALL WELD SHALL BE GROUND AND THE ALL PARTS SHALL BE BLACK POWDER COATED. | | DEBUR AND BREAK SHARP EDGES | | DO NOT SCALE DRAWING | | REVISION | |
| | | | | | | ANDHRA PRADESH STATE ROAD TRANSPORT CORPORATION | | | |
| | | | | | | TITLE: RVM BRACKET ASSEMBLY FOR ALU BODIES | | | |
| DRAWN | | NAME | | SIGNATURE | | DATE | | DWG NO: RVMASSEMBLY16712 | |
| CHK'D | | DSRC MURTHY | | | | | | A4 | |
| APP'VD | | | | | | | | | |
| MFG | | | | | | | | | |
| Q.A | | | | | | MATERIAL: | | | |
| | | | | | | WEIGHT: | | SCALE: 1:10 | |
| | | | | | | | | SHEET 1 OF 1 | |



UNLESS OTHERWISE SPECIFIED:
DIMENSIONS ARE IN MILLIMETERS
SURFACE FINISH:
TOLERANCES:
LINEAR:
ANGULAR:

FINISH:
BLACK POWDER COATED

DEBUR AND
BREAK SHARP
EDGES

DO NOT SCALE DRAWING

REVISION

ANDHRA PRADESH STATE ROAD TRANSPORT CORPORATION

| NAME | SIGNATURE | DATE |
|-----------------------------|-----------|------|
| DRAWN DSRCMURTHY | | |
| CHKD | | |
| APPVD | | |
| MFG | | |
| Q.A | | |
| MATERIAL: CAST. ALUMINUM | | |
| WEIGHT: | | |

TITLE:
BASE FOR REAR VIEW MIRROR

DWG NO. rvmbase_1

A4

SCALE:1:2

SHEET 1 OF 1